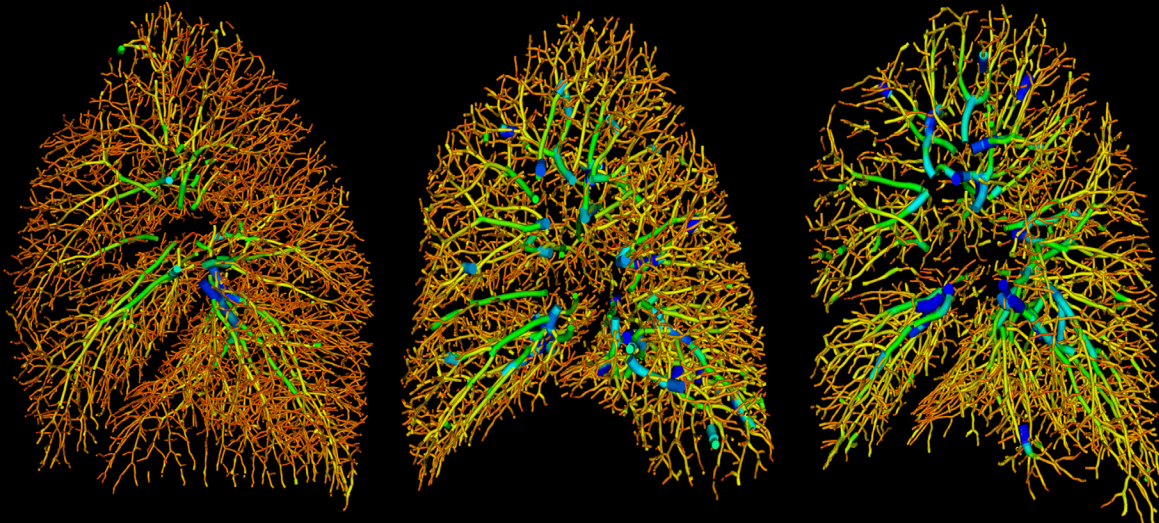


Combined Yale and Brigham and Women's Hospital

Pulmonary Hypertension Symposium

Friday, April 21, 2023

Yale West Campus, Orange, CT



OVERVIEW

This program is a one-day meeting designed to educate physicians and other health care providers on advances in the diagnosis and treatment of pulmonary hypertension. Despite therapeutic advances, the prognosis of pulmonary hypertension remains poor, which likely reflects the delayed detection of the disease and scarcity of disease-modifying therapies that are currently available. Knowledge on the acute and chronic management strategies of patients with pulmonary hypertension are important for health care providers to understand the complexity of managing patients with pulmonary hypertension.

LEARNING OBJECTIVES

At the conclusion of this program, the participants should be able to:

- Explore current available and novel treatments in PAH
- Distinguish between the different treatment strategies available for CTEPH management
- Discuss the principles of advanced cardio-pulmonary exercise testing
- Describe the indications and contra-indications for advanced mechanical circulatory support on advanced heart failure

SYMPOSIUM DIRECTORS & SPEAKERS

COURSE DIRECTORS

Inderjit Singh MD, FRCP

Assistant Professor of Medicine
Yale School of Medicine

Director, Pulmonary Vascular Disease Program,
Yale New Haven Health, Division of Pulmonary,
Critical Care, & Sleep Medicine

Aaron B. Waxman MD, PhD

Associate Professor of Medicine
Harvard Medical School

Executive Director, Pulmonary Heart Disease
Program, Brigham & Women's Hospital, Division of
Pulmonary & Critical Care Medicine

SPEAKERS

- » Eileen M. Harder MD
- » Phillip Joseph MD
- » Jane A. Leopold MD
- » Hannah Oakland MD
- » Farbod N. Rahaghi MD, PhD
- » Stella Savarimuthu MD
- » Sounok Sen MD
- » David M. Systrom MD
- » R. James White III MD, PhD

AGENDA *subject to change*

- 7:00 AM** Registration and Continental Breakfast
- 8:00 AM** Welcome and Introductory Remarks
Inderjit Singh MD, FRCP
- 8:15 AM** Pulmonary Hypertension Year in Review
Hannah Oakland MD
- 8:45 AM** Novel Treatments in PAH
Aaron B. Waxman MD, PhD
- 9:15 AM** Current Approaches to Management of Chronic Thrombo-embolic Pulmonary Hypertension (CTEPH)
Jane A. Leopold MD
- 9:45 AM** Clinical Case from Yale New Haven Hospital
Stella Savarimuthu MD
- 10:15 AM** Refreshment Break
- 10:30 AM** ICU Management of the PH Patient
Phillip Joseph MD
- 11:00 AM** Diagnostic and Management Approach to Patients with Unexplained Dyspnea
David M. Systrom MD
- 11:30 AM** Mechanical Circulatory Support in PH-Heart Failure
Sounok Sen MD
- 12:00 PM** Question and Answer Discussion
- 12:15 PM** Lunch
- 12:55 PM** Reconvene and Remarks
Aaron B. Waxman MD, PhD
- 1:00 PM** Advanced ECHO and Cardiac MRI in PAH
Farbod N. Rahaghi MD, PhD
- 1:30 PM** Management of Group 3 Pulmonary Hypertension: When Should We Treat?
R. James White III MD, PhD
- 2:00 PM** Clinical Case from Brigham and Women's Hospital
Eileen M. Harder MD
- 2:30 PM** Question and Answer Discussion/
Closing Remarks
- 3:00 PM** Adjourn

Accreditation Statement

The Yale School of Medicine is accredited by the Accreditation Council for Continuing Medical Education to provide continuing medical education for physicians.

Designation Statement

The Yale School of Medicine designates this educational activity for a maximum of 6.0 *AMA PRA Category 1 Credits™*. Physicians should claim only the credit commensurate with the extent of their participation in the activity.

Disclosure Policy

It is the policy of Yale School of Medicine, Continuing Medical Education (CME), to ensure balance, independence, objectivity, and scientific rigor in all its educational programs. All individuals involved in the development and presentation of Accredited Continuing Education activities are required to disclose all financial relationship(s) with ineligible companies (those whose primary business is producing, marketing, selling, re-selling, or distributing healthcare products used by or on patients) that has occurred within the past 24 months; and the opportunity to affect the content of CME about the products or services of the commercial interests. This information is disclosed to all activity participants prior to the commencement of the educational activity.

Mitigation of Financial Relationships Statement

Yale CME adheres to the ACCME's Standards for Integrity and Independence in Accredited Continuing Education. Any individuals in a position to control the content of a CE activity, including faculty, planners, reviewers or others are required to disclose all relevant financial relationships with ineligible companies. All relevant conflicts of interest have been mitigated prior to the commencement of the activity.

Financial Statement

The Yale School of Medicine, Department of Internal Medicine, Section of Pulmonary, Critical Care & Sleep Medicine is grateful to its supporters. They are acknowledged in all conference materials.



To Register or full event information
scan code with smart device