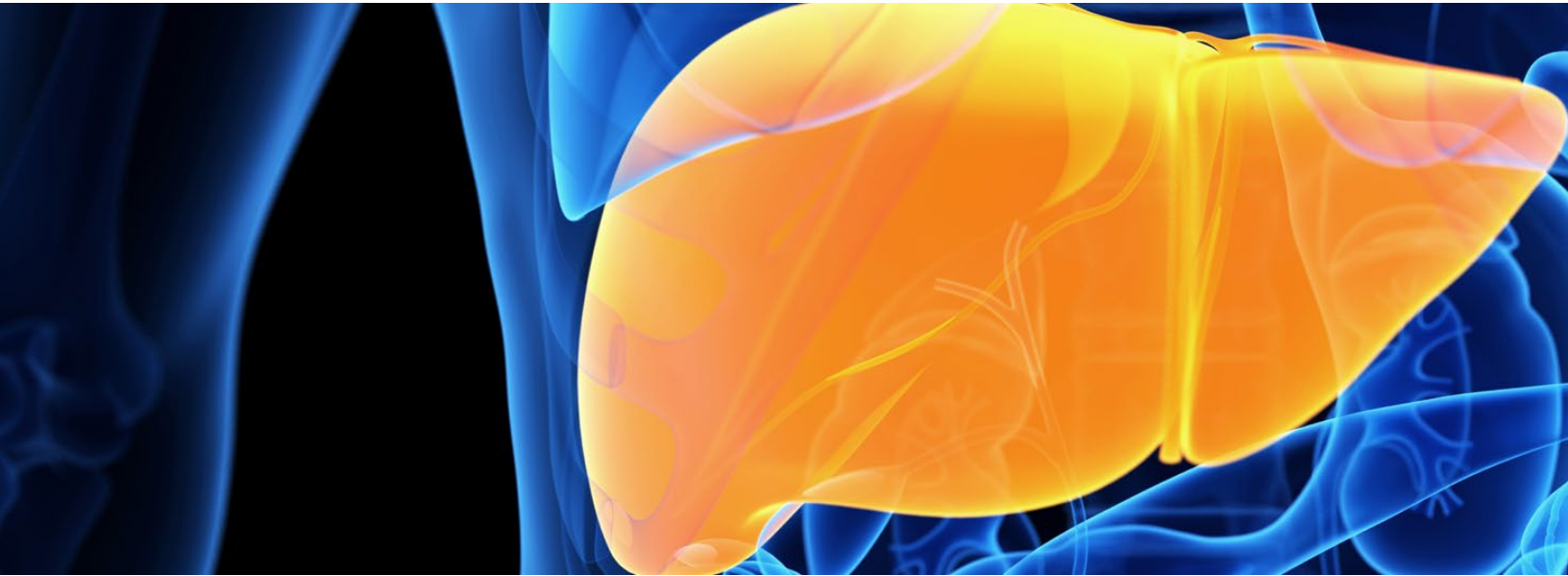


# Yale Liver Update 2022

Friday, December 2, 2022  
The Anlyan Center (TAC), New Haven, CT



Yale Liver Update 2022 is an annual CME course designed to provide a comprehensive review of the latest advances in the science and practice of hepatology, including updated research and guidelines from the Digestive Diseases Week (DDW), European Association for the Study of the Liver (EASL) and American Association for the Study of the Liver (AASLD) Meetings. Key educational content will be summarized to enhance clinical implementation in the context of clinicians within internal medicine, surgery, gastroenterology, and hepatology.

## RSVP & DETAILS:

<https://yale.cloud-cme.com/liverupdate2022>

## CONTACT:

Farrah Nettleton | [cme@yale.edu](mailto:cme@yale.edu)

## AGENDA OVERVIEW

### Start and End Times

7:45AM—4:40PM

**Session I:** 8:00AM—9:40AM

**Break:** 9:40AM

**Session II:** 10:00AM—12:00PM

**Lunch & Keynote:** 12:00PM—1:00PM

**Session III:** 1:00PM—2:40PM

**Break:** 2:40PM

**Session IV:** 3:00PM—4:40PM



## SYMPOSIUM DIRECTOR & SPEAKERS

### COURSE DIRECTOR

#### **Joseph K. Lim MD**

*Professor of Medicine (Digestive Diseases)  
Vice-Chief, Section of Digestive Diseases  
Director, Clinical Hepatology*

### YALE SCHOOL OF MEDICINE FACULTY:

#### **David Assis MD**

*Associate Professor of Medicine  
(Digestive Diseases)  
Director, Gastroenterology  
Fellowship Program*

#### **Bubu Banini MD, PhD**

*Assistant Professor of Medicine  
(Digestive Diseases)  
Translational Research Director,  
Metabolic Health and  
Weight Loss Program*

#### **James Boyer MD**

*Ensign Professor of Medicine  
(Digestive Diseases)  
Emeritus Director, Yale Liver Center*

#### **Cary Caldwell MD**

*Associate Professor of Clinical Medicine  
(Digestive Diseases)*

#### **Albert Do MD, MPH**

*Assistant Professor of Medicine  
(Digestive Diseases)  
Clinical Director,  
Fatty Liver Disease Program*

#### **Jonathan Dranoff MD**

*Professor of Medicine  
(Digestive Diseases)  
Director, Fatty Liver Program, VA  
Connecticut Health System*

#### **Guadalupe Garcia-Tsao MD**

*Professor of Medicine (Digestive Diseases)  
Director, Yale Liver Center-Clinical Core*

#### **Vikas Gupta MD, PhD**

*Assistant Professor of Medicine  
(Digestive Diseases)  
Associate Director, Gastroenterology  
Fellowship Program*

#### **Lamia Haque MD, MPH**

*Assistant Professor of Medicine  
(Digestive Diseases)  
Director, Yale Clinic for Alcohol and  
Addiction Treatment in Hepatology*

#### **Ariel Jaffe MD**

*Assistant Professor of Medicine  
(Digestive Diseases)*

#### **Simona Jakab MD**

*Associate Professor of Medicine  
(Digestive Diseases)  
Firm Chief, Klatskin Liver Service*

#### **Vandana Khungar MD, MSc**

*Associate Professor of Medicine  
(Digestive Diseases)  
and of Surgery (Transplant)  
Vice-Chief for Diversity, Equity,  
and Inclusion  
Associate Medical Director  
of Liver Transplant  
Medical Director of Outpatient and Outreach  
Transplant Hepatology*

#### **Joseph K. Lim MD**

*Professor of Medicine (Digestive Diseases)  
Vice-Chief, Section of Digestive Diseases  
Director, Clinical Hepatology*

#### **Matthew McConnell MD**

*Assistant Professor of Medicine  
(Digestive Diseases)*



**Wajahat Mehal MD, PhD**

*Professor of Medicine (Digestive Diseases)  
Director, Fatty Liver Disease Program  
Director, Metabolic Health  
and Weight Loss Program*

**Pramod Mistry MD, PhD**

*Professor of Medicine  
(Digestive Diseases) and of  
Pediatrics (Gastroenterology)  
Director, Yale Metabolic  
and Genetic Liver Diseases Program*

**Michael Nathanson MD, PhD**

*Gladys Phillips Crofoot Professor of Medicine  
(Digestive Diseases)  
and of Cell Biology  
Director, Yale Liver Center  
Director, Center for Cell  
and Molecular Imaging*

**Michael Schilsky MD**

*Professor of Medicine  
(Digestive Diseases)  
and Surgery (Transplantation)  
Director, YNHH Liver Transplant Program*

**Marina Silveira MD**

*Associate Professor of Medicine  
(Digestive Diseases)*

**Tamar H. Taddei MD**

*Professor of Medicine  
(Digestive Diseases)  
Director, VACT Liver Cancer Program  
Chief of Gastroenterology,  
VA Connecticut Healthcare System  
Associate Director, Yale Medical Scientist  
Training Program*

**Uyen To MD**

*Assistant Professor of Medicine  
(Digestive Diseases)*

**Silvia Vilarinho MD, PhD**

*Associate Professor of Medicine  
(Digestive Diseases) and of Pathology  
Associate Director, Yale Medical Scientist  
Training Program*

**Susan Zapatka APRN**

*Nurse Practitioner, VA Connecticut  
Liver Resource Center*



**AGENDA** *subject to change*

7:45am Welcome and Introductions  
*Joseph K. Lim MD and Michael Nathanson MD, PhD*

**Session I**

*Moderator: Wajahat Mehal MD*

8:00am Viral Hepatitis (HBV, HCV, HDV)  
*Joseph K. Lim MD*

8:20am Non-Alcoholic Steatohepatitis (NASH) – Weight Management  
*Bubu Banini MD*

8:40am Non-Alcoholic Steatohepatitis (NASH) – Pharmacologic Therapy  
*Albert Do MD*

9:00am Alcoholic Liver Disease  
*Matthew McConnell MD*

9:20am Panel Discussion  
*Moderator: Wajahat Mehal MD*

9:40am Break

**Session II**

*Moderator: James Boyer MD*

10:00am Autoimmune/Checkpoint Inhibitor Hepatitis  
*David Assis MD*

10:20am Primary Biliary Cholangitis (PBC)/Primary Sclerosing Cholangitis (PSC)  
*Marina Silveira MD*

10:40am Wilson's Disease  
*Michael Schilsky MD*

11:00am Gaucher's Disease  
*Pramod Mistry MD*

11:20am Rare Genetic Liver Diseases (A1AT Deficiency, Hepatic Porphyria, and Beyond)  
*Silvia Vilarinho MD*

11:40am Panel Discussion  
*Moderator: James Boyer MD*

12:00pm **Lunch & Keynote Lecture**  
Management of AKI-HRS in Patients with Cirrhosis  
*Moderator: Susan Zapatka APRN*



*Lecturer: Guadalupe Garcia-Tsao MD*

### **Session III**

*Moderator: Cary Caldwell MD*

- 1:00pm      Drug-Induced Liver Injury  
*Jonathan Dranoff MD*
- 1:20pm      Acute Liver Failure  
*Uyen To MD*
- 1:40pm      Cholestatic Liver Disorders in Children (PFIC, Alagille, and Biliary Atresia)  
*Rima Fawaz MD*
- 2:00pm      Liver Disease and Pregnancy  
*Vandana Khungar MD*
- 2:20pm      Panel Discussion  
*Moderator: Cary Caldwell MD*
- 2:40pm      Break

### **Session IV**

*Moderator: Vikas Gupta MD*

- 3:00pm      Addiction Disorders in Patients with Liver Disease  
*Lamia Haque MD*
- 3:20pm      Bleeding and Thrombosis in Cirrhosis  
*Simona Jaka, MD*
- 3:40pm      Benign Liver Tumors  
*Ariel Jaffe MD*
- 4:00pm      Hepatocellular Carcinoma  
*Tamar Taddei MD*
- 4:20pm      Panel Discussion  
*Moderator: Vikas Gupta MD*
- 4:40pm      Concluding Remarks



#### Accreditation Statement

The Yale School of Medicine is accredited by the Accreditation Council for Continuing Medical Education to provide continuing medical education for physicians.

#### Designation Statement

The Yale School of Medicine designates this educational activity for a maximum of **7.5 AMA PRA Category 1 Credits™**. Physicians should claim only the credit commensurate with the extent of their participation in the activity.

#### Disclosure Policy

It is the policy of Yale School of Medicine, Continuing Medical Education (CME), to ensure balance, independence, objectivity, and scientific rigor in all its educational programs. All individuals involved in the development and presentation of Accredited Continuing Education activities are required to disclose all financial relationship(s) with ineligible companies that has occurred within the past 24 months; and the opportunity to affect the content of CME about the products or services of the commercial interests. This information is disclosed to all activity participants prior to the commencement of the educational activity.

#### Mitigation of Financial Relationships Statement

Yale CME adheres to the ACCME's Standards for Integrity and Independence in Accredited Continuing Education. Any individuals in a position to control the content of a CE activity, including faculty, planners, reviewers or others are required to disclose all relevant financial relationships with ineligible entities (commercial interests). All relevant conflicts of interest have been mitigated prior to the commencement of the activity.

#### Financial Statement

Yale School of Medicine Department of Internal Medicine, Section of Digestive Diseases, is grateful to its supporters. They are acknowledged in all conference materials.