



Yale
Continuing
Medical
Education
YALE SCHOOL OF MEDICINE

Aorta As an Organ

A Continuum of Lifelong Care

KEYNOTE SPEAKER

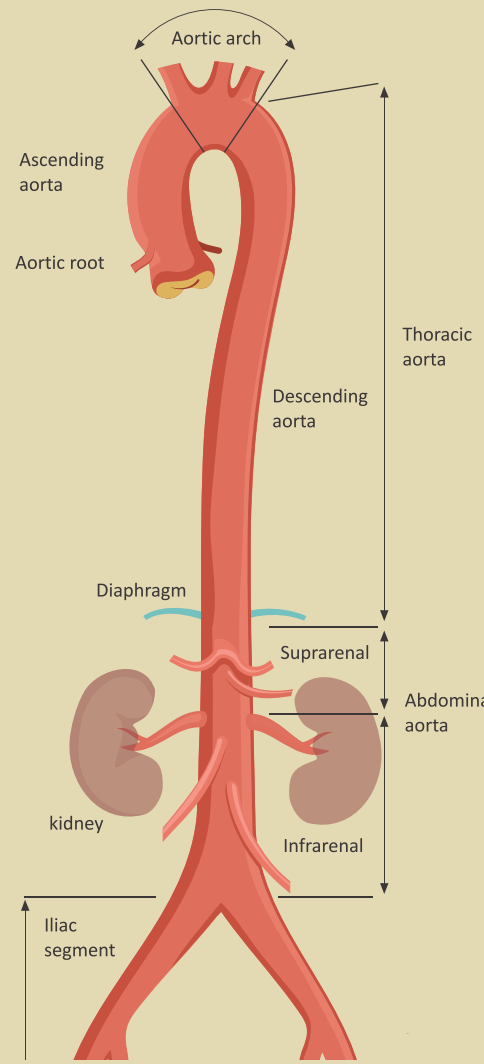
Dr. Hal C. Dietz III

Professor of Genetic Medicine

*Victor A. McKusick Professor of Medicine and Genetics
Johns Hopkins University School of Medicine*

Friday October 2, 2026, 8:30 AM – 5:45 PM

The Anlyan Center, 300 Cedar Street, New Haven, CT
Yale School of Medicine



This course will provide world class educational programming regarding all aspects of aortic disease, including the root, ascending, arch, descending, abdominal, and thoracoabdominal segments. The goal of this unique conference is to provide up-to-the-minute evidence-based education in the diagnosis and management of aortic disease.

This conference will bring together experts from cardiac surgery, vascular surgery, diagnostic imaging, cardiology, and genetics for multi-disciplinary exploration of current optimal diagnosis and management of aortic diseases.

COURSE DIRECTORS



Prashanth Vallabhajosyula, MD, MS

Professor of Surgery and
Director of the Aortic Institute
Yale School of Medicine



John A. Elefteriades, MD

William W. L. Glenn Professor of Surgery
Yale University School of Medicine
Founder of the Aortic Institute at Yale
Editor-in-Chief of the journal AORTA



David Kuwayama MD, MPA, Phil

Director of Aortic Surgery, Vascular Surgery, and
Endovascular Therapy for the Division
of Vascular Surgery, Yale University



Sandip Mukherjee, MD

Chief of Complex and Executive Health,
The Executive Medical Director of the
Office of the Chief Medical Officer, and
the Cardiac Director of the Aortic Institute

Aorta As an Organ: A Continuum of Lifelong Care

Friday, October 2, 2026, 8:30 AM - 5:45 PM

ACCREDITATION STATEMENT

The Yale School of Medicine is accredited by the Accreditation Council for Continuing Medical Education to provide continuing medical education for physicians.

DESIGNATION STATEMENT

The Yale School of Medicine designates this live material for a maximum of **8.5 AMA PRA Category™**. Physicians should claim only the credit commensurate with the extent of their participation in the activity.

The Yale School of Medicine, Department of Internal Medicine, Section of Cardiology are grateful to their supporters.

To register and view the conference program, please visit www.cme.yale.edu
To contact Yale CME: cme@yale.edu



Yale
Continuing
Medical
Education
YALE SCHOOL OF MEDICINE